

# Recovered Material Markets for General Construction & Demolition Recycling



**K. Hoving Recycling & Disposal**  
**Presentation by K.J. Loerop, Vice President**

# Construction & Demolition Recycling History

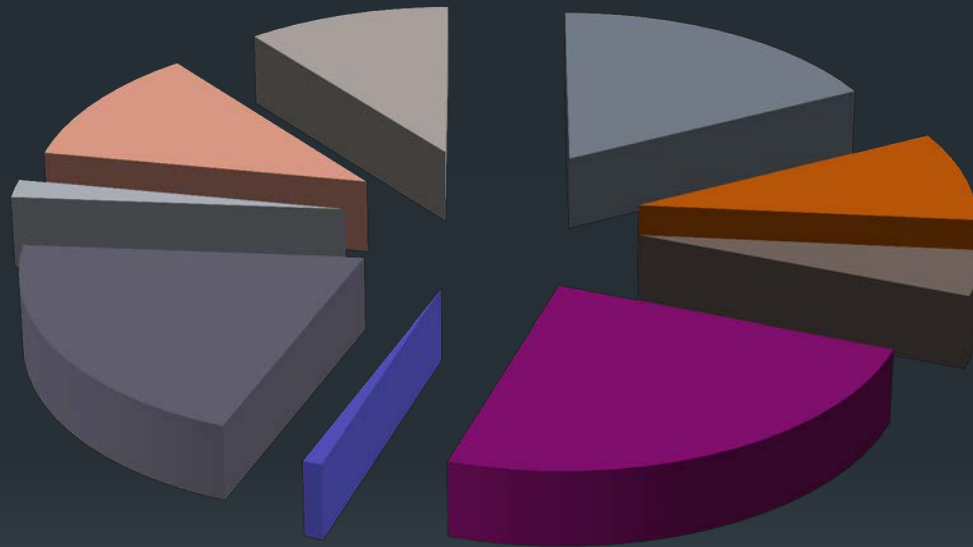
- The General Construction & Demolition Recycling industry is strong in Northern Illinois.
- In the mid 1990's the IEPA passed 22.38 to encourage General Construction & Demolition Recycling
- C&D Recycling Facilities were permitted state wide as of 2001.
- In 2013 Green building & L.E.E.D. requirements were introduced
- In 2013 I.D.O.T. Accepted asphalt shingle recycling in their mixes for roadways.
- Cook County, Chicago, and Lake County have C&D Recycling requirements
- Recently RCI Certification has been introduced. RCI is a process to certify C&D Recycling plants.



# Average Non-Recycle Rate = 20-25%



- Non Recycle Material
- Landfill Infrastructure Material
- Ferrous & Non Ferrous Metals
- Wood
- Plastics
- Aggregates
- Paper/Cardboard
- Drywall
- Asphalt Shingles



# 27 Acre General Construction & Demolition Recycling Facility located at 1655 Powis Rd, West Chicago, IL 60185



# Customer Loads the Dumpster





# Transportation of Materials



# Commingled Construction Debris



# Machine Pre-sort





# Screener Separates Material into 3 different sizes

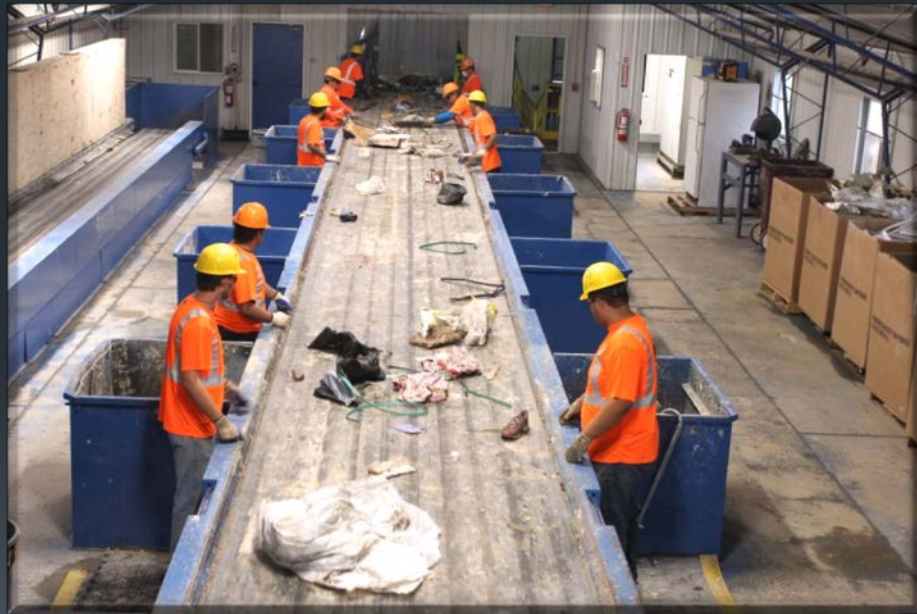


# Automation of Steel Separation





# Manual Separation of Materials



# C&D Recycling Separates and recycles up to 25 different items

- Clean Dimensional Lumber
- Pallets
- Broken Pallets
- Painted/Treated lumber
- Cardboard
- Unpainted Drywall
- Brick
- Block
- Dirt
- Gravel
- Clay
- Pea Gravel
- Ferrous Metals
- Copper Pipe
- Aluminum Cans
- House Wire
- Phone Cable
- Aluminum
- Painted Aluminum
- Brass
- Coaxial Cable
- Plastics
- Asphalt Shingles
- Paper
- Concrete



# “A” Wood



# Wood Uses

- Mulch
- Animal Bedding
- Erosion Control
  - Fuel Pellets
  - Absorbents
  - Furniture



# Dyed Mulch



# “B” Wood

**Treated or Stained  
Lumber**



**Painted or Plywood**





# Cardboard



# Drywall



# Rigid Plastic





# Aggregates





# Ferrous Metals



# Non-Ferrous Metals





# Sorted Asphalt Shingles





# Recycled Asphalt Shingles (RAS)

